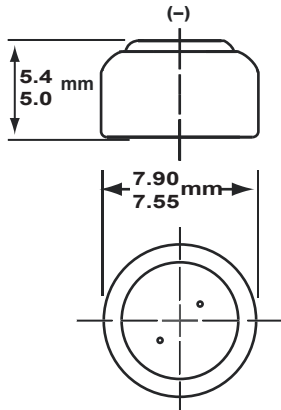


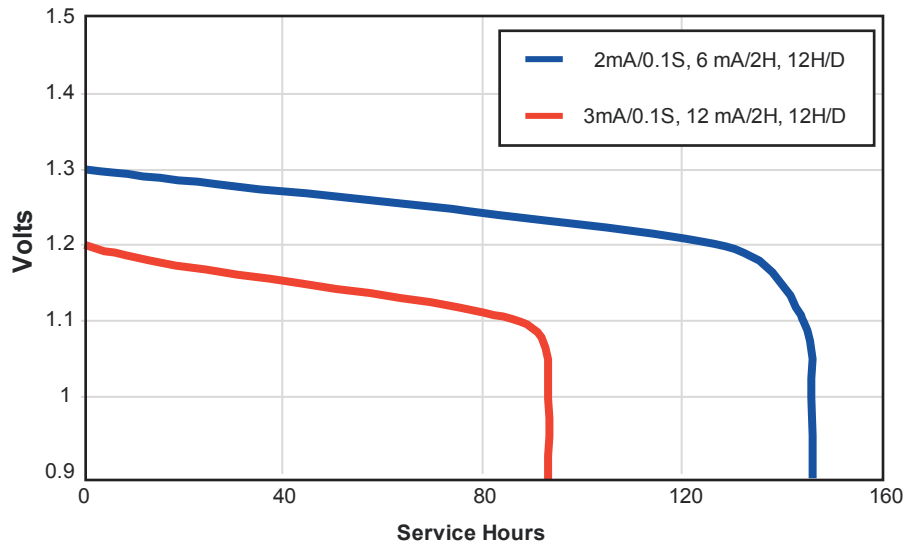
Specifications

Classification:	Zinc
Chemical System:	Zinc Air (Zn/O ₂)
Designation:	ANSI-7000 ZD, IEC-PR48
Nominal Voltage:	1.4V
Operating Temp:	0°C to 50°C (32°F to 122°F)
Typical Weight:	0.8 g
Typical Volume:	0.26 cm ³
Rated Capacity:	300 mAh @ 1500 ohm to 1.1V
Typical Impedance:	7.5 ohm @ 1kHz



Dimensions shown here are IEC/ANSI standard

Typical Discharge Characteristics at 21°C (70°F)



DURACELL®
BATTERIES

Berkshire Corporate Park
Bethel, CT 06801 U.S.A.
Telephone: Toll free 1.800.544.5454
Internet: www.duracell.com

*Delivered capacity is dependent on the applied load, intermittent usage, operating temperature and cut off voltage. Please refer to the charts and discharge data for examples of energy/service life that the battery will provide for various conditions.

Information and contents in this data sheet are for reference purposes only. They do not constitute any warranty and representation is subject to change without notice. For most current information and further details, please contact Duracell.