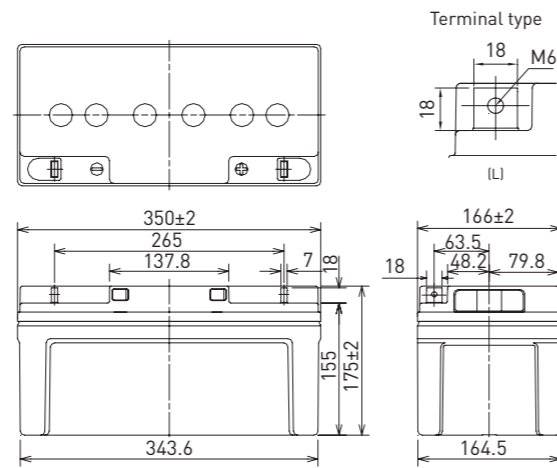


LC-QA1270P

DIMENSIONS (MM)



FOR STANDBY POWER SUPPLIES.  
EXPECTED TRICKLE DESIGN LIFE: 15 YEARS AT 20°C.



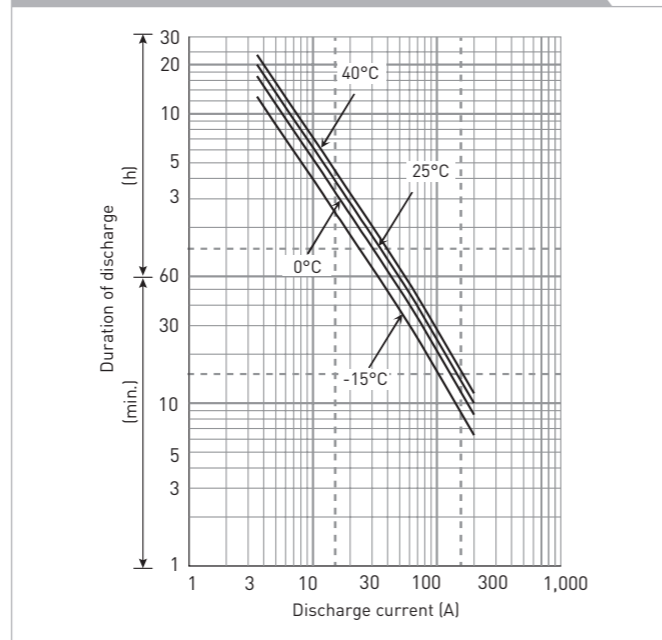
Contents indicated (including the recycle marking, etc.) are subject to change without notice.

Battery case resin: flame retardant (UL94 V-0)

SPECIFICATIONS

<b>Name</b>	LC-QA1270P	
<b>Nominal voltage</b>	12V	
<b>Nominal capacity (20 hour rate)</b>	70Ah	
<b>Dimensions</b>	<b>Length</b>	350mm
	<b>Width</b>	166mm
	<b>Height</b>	175mm
<b>Approx. mass</b>	23.5kg	
<b>Terminal</b>	M6 bolt/nut	
<b>Capacity (25°C)</b>	<b>20 hour rate</b>	71Ah
	<b>10 hour rate</b>	65Ah
	<b>3 hour rate</b>	55Ah
	<b>1 hour rate</b>	46Ah
<b>Impedance</b>	<b>Fully charged battery (25°C)</b>	5mΩ
<b>Temperature dependency of capacity (20 hour rate)</b>	<b>40°C</b>	102%
	<b>25°C</b>	100%
	<b>0°C</b>	85%
	<b>-15°C</b>	65%
<b>Self-discharge (25°C)</b>	<b>After 3 month</b>	91%
	<b>After 6 month</b>	82%
	<b>After 12 month</b>	64%

DURATION OF DISCHARGE VS. DISCHARGE CURRENT



WATT TABLE (25°C)

Cut-off	(Wattage/battery)													
	10min.	15min.	20min.	30min.	45min.	1h	1.5h	2h	3h	4h	5h	6h	10h	20h
9.6V	1,977	1,504	1,234	916	676	549	386	333	240	181	148	130	75.5	41.7
9.9V	1,947	1,491	1,227	909	660	520	367	323	234	177	146	127	74.0	41.5
10.2V	1,867	1,463	1,197	899	655	519	365	311	224	168	138	122	73.1	41.2
10.5V	1,814	1,436	1,173	884	641	509	358	306	221	166	137	120	73.0	39.8
10.8V	1,704	1,357	1,153	865	626	499	351	299	219	165	135	119	12.5	39.4

AMPERE TABLE (25°C)

Cut-off	(Ampere/battery)													
	10min.	15min.	20min.	30min.	45min.	1h	1.5h	2h	3h	4h	5h	6h	10h	20h
9.6V	200	146	118	85.9	62.8	48.4	34.8	27.1	19.4	15.0	12.5	10.5	6.50	3.53
9.9V	199	144	117	85.0	61.2	47.7	33.9	27.0	19.1	14.9	12.4	10.4	6.50	3.53
10.2V	197	140	116	83.8	60.9	47.3	33.7	26.8	18.9	14.8	12.3	10.3	6.50	3.53
10.5V	187	136	110	82.7	59.5	45.6	33.3	26.7	18.4	14.7	12.1	10.2	6.50	3.53
10.8V	177	132	108	81.4	51.1	41.0	29.4	24.9	17.8	14.4	12.0	10.1	6.50	3.47

All mentioned values are average values

LC-QA1270P

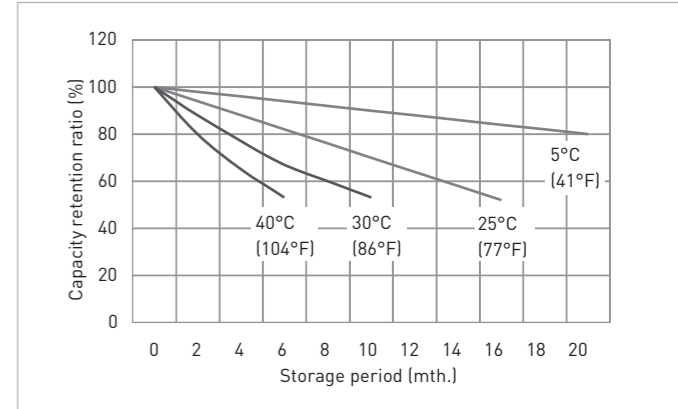
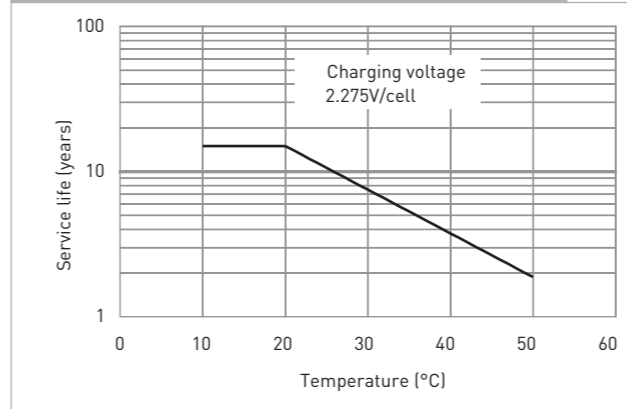
CHARGING METHOD (25°C)

Trickle use Control voltage: 13.6V - 13.8V  
Initial current: 10.5A or smaller

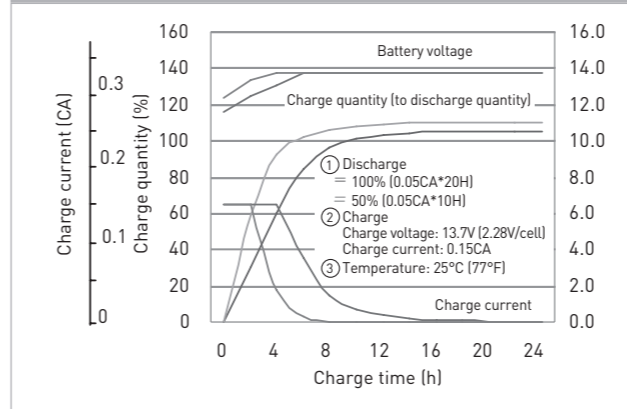
CUT-OFF VOLTAGE

<b>Discharge current</b>	3.50A - 14.0A	14.0A - 35.0A	35.0A - 70.0A	70.0A - 140A	140A - 210A
<b>Cut-off voltage</b>	10.5V	10.2V	9.9V	9.3V	8.7V

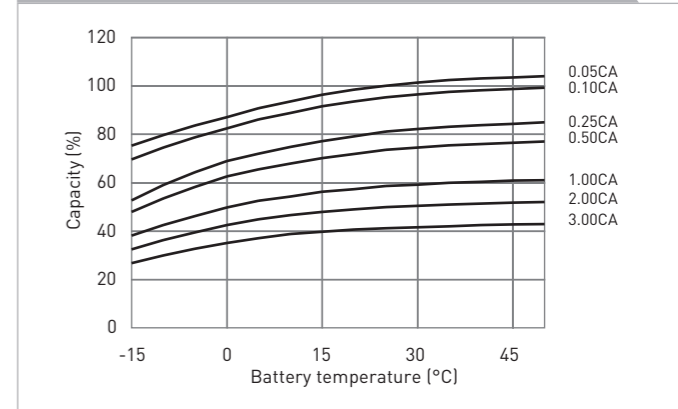
INFLUENCE OF TEMPERATURE ON TRICKLE LIFE



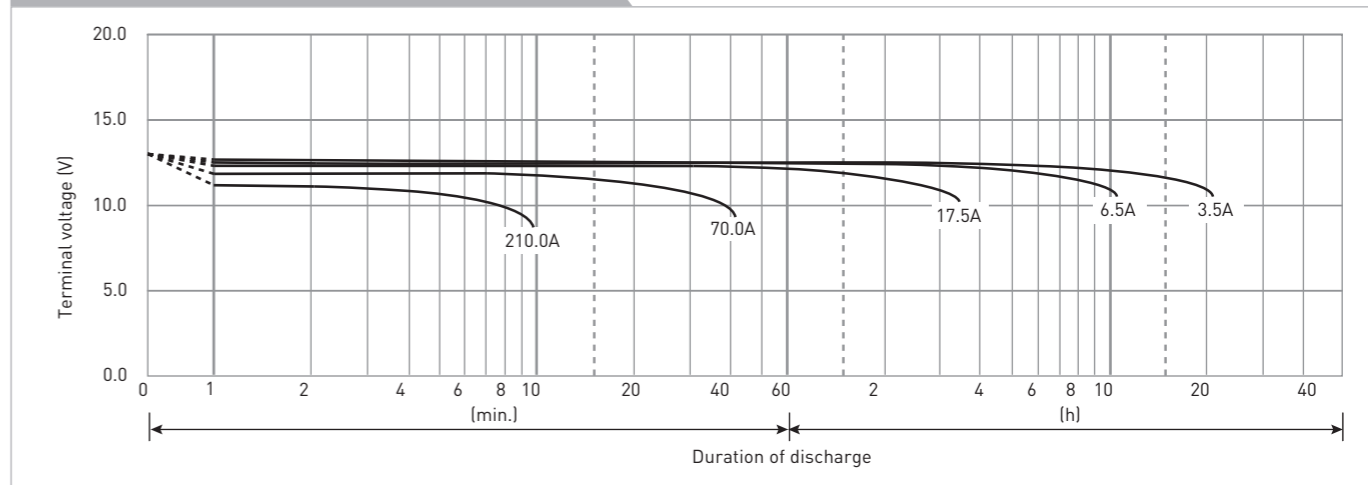
CONSTANT-VOLTAGE CONSTANT-CURRENT CHARGE CHARACTERISTICS FOR TRICKLE USE



DISCHARGE CAPACITY BY TEMPERATURE AND BY DISCHARGE CURRENT



DISCHARGE CHARACTERISTICS



The data in this document are for descriptive purposes only and are not intended to make or imply any guarantee or warranty. Regarding handling and safety please consult our VRLA technical handbook chapter 1.