

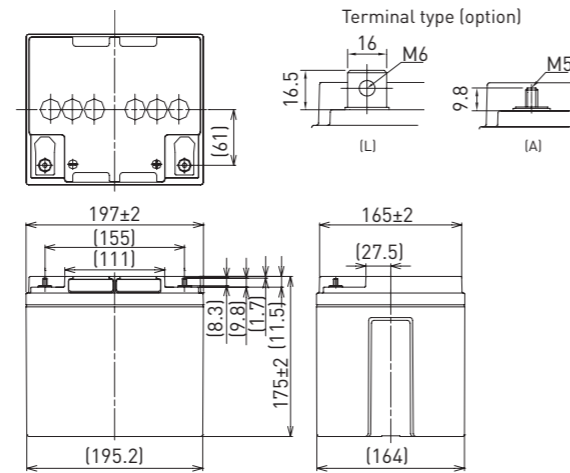
LC-XC1238P

DIMENSIONS (MM)



Contents indicated (including the recycle marking, etc.) are subject to change without notice.

FOR MAIN POWER SUPPLIES.
CYCLE LONG-LIFE TYPE

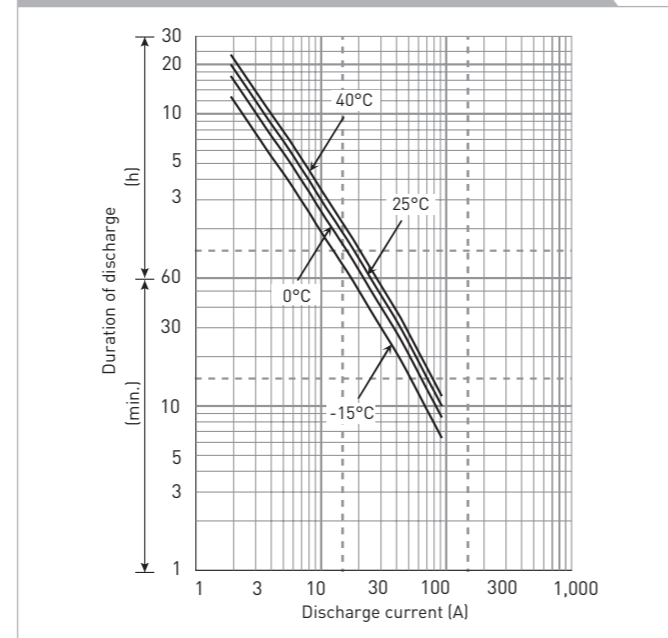


Battery case resin: standard (UL94 HB)

SPECIFICATIONS

| | |
|---|----------------------------------|
| Name | LC-XC1238P/AP |
| Nominal voltage | 12V |
| Nominal capacity (20 hour rate) | 38Ah |
| Dimensions | Length 197mm |
| | Width 165mm |
| | Height 175mm/180mm |
| Approx. mass | 15.0kg |
| Terminal | M6 bolt/nut & M5 threaded post |
| Capacity (25°C) | 20 hour rate 38Ah |
| | 10 hour rate 36Ah |
| | 3 hour rate 29Ah |
| | 1 hour rate 23Ah |
| Impedance | Fully charged battery (25°C) 8mΩ |
| | 40°C 102% |
| Temperature dependency of capacity (20 hour rate) | 25°C 100% |
| | 0°C 85% |
| | -15°C 65% |
| | After 3 month 91% |
| Self-discharge (25°C) | After 6 month 82% |
| | After 12 month 64% |

DURATION OF DISCHARGE VS. DISCHARGE CURRENT



WATT TABLE (25°C)

| Cut-off | [Wattage/battery] | | | | | | | | | | | | | | |
|---------|-------------------|--------|--------|--------|--------|--------|-----|------|-----|-----|------|------|------|------|------|
| | 5min. | 10min. | 15min. | 20min. | 30min. | 45min. | 1h | 1.5h | 2h | 3h | 4h | 5h | 6h | 10h | 20h |
| 9.6V | 1,349 | 1,030 | 800 | 686 | 505 | 351 | 276 | 214 | 169 | 123 | 99.2 | 77.9 | 68.3 | 42.0 | 22.8 |
| 9.9V | 1,271 | 1,008 | 788 | 682 | 500 | 350 | 269 | 209 | 168 | 120 | 98.0 | 76.7 | 68.0 | 42.0 | 22.8 |
| 10.2V | 1,204 | 980 | 768 | 672 | 489 | 349 | 267 | 185 | 167 | 119 | 96.8 | 75.5 | 67.7 | 42.0 | 22.8 |
| 10.5V | 1,126 | 952 | 748 | 661 | 480 | 346 | 265 | 183 | 166 | 117 | 95.6 | 74.9 | 67.4 | 42.0 | 22.8 |
| 10.8V | 1,098 | 874 | 716 | 640 | 468 | 308 | 247 | 175 | 155 | 114 | 94.4 | 74.3 | 67.1 | 42.0 | 22.8 |

AMPERE TABLE (25°C)

| Cut-off | [Ampere/battery] | | | | | | | | | | | | | | |
|---------|------------------|--------|--------|--------|--------|--------|------|------|------|------|------|------|------|------|------|
| | 5min. | 10min. | 15min. | 20min. | 30min. | 45min. | 1h | 1.5h | 2h | 3h | 4h | 5h | 6h | 10h | 20h |
| 9.6V | 121 | 92.0 | 69.6 | 59.1 | 43.2 | 29.9 | 23.4 | 18.1 | 14.3 | 10.3 | 8.30 | 6.50 | 5.70 | 3.60 | 1.90 |
| 9.9V | 114 | 90.0 | 68.5 | 58.8 | 42.7 | 29.8 | 22.8 | 17.7 | 14.2 | 10.1 | 8.20 | 6.40 | 5.68 | 3.60 | 1.90 |
| 10.2V | 108 | 87.5 | 66.8 | 57.9 | 41.8 | 29.7 | 22.7 | 15.7 | 14.1 | 10.0 | 8.10 | 6.30 | 5.66 | 3.60 | 1.90 |
| 10.5V | 101 | 85.0 | 65.0 | 57.0 | 41.0 | 29.5 | 22.5 | 15.5 | 14.0 | 9.80 | 8.00 | 6.25 | 5.64 | 3.60 | 1.90 |
| 10.8V | 98.5 | 78.0 | 62.3 | 55.2 | 40.0 | 26.2 | 21.0 | 14.8 | 13.1 | 9.60 | 7.90 | 6.20 | 5.60 | 3.60 | 1.90 |

All mentioned values are average values

LC-XC1238P

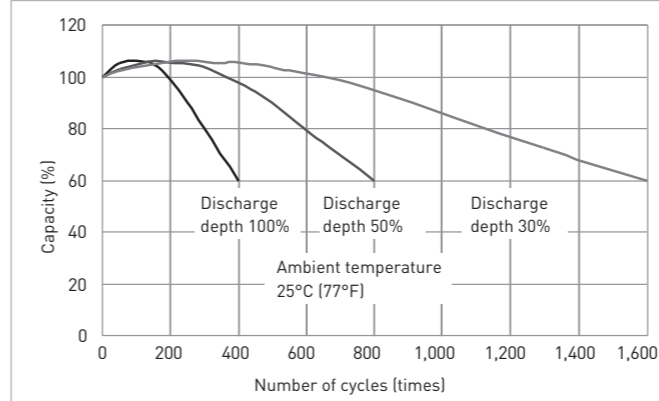
CHARGING METHOD (25°C)

Cycle use Control voltage: 14.5V - 14.9V
Initial current: 15.2A or smaller

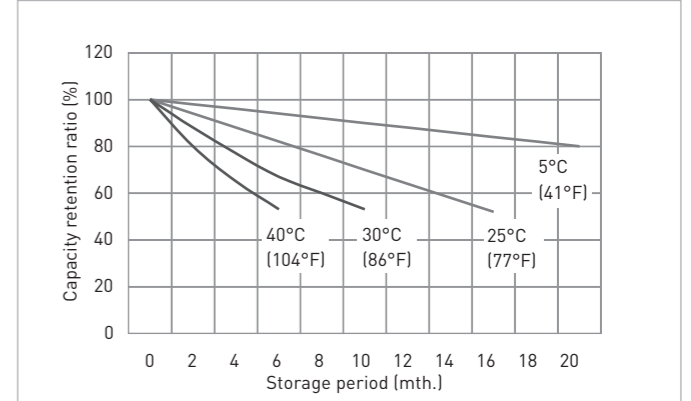
CUT-OFF VOLTAGE

| | | | | | |
|-------------------|---------------|---------------|---------------|---------------|--------------|
| Discharge current | 1.90A - 7.60A | 7.60A - 19.0A | 19.0A - 38.0A | 38.0A - 76.0A | 76.0A - 114A |
| Cut-off voltage | 10.5V | 10.2V | 9.9V | 9.3V | 8.7V |

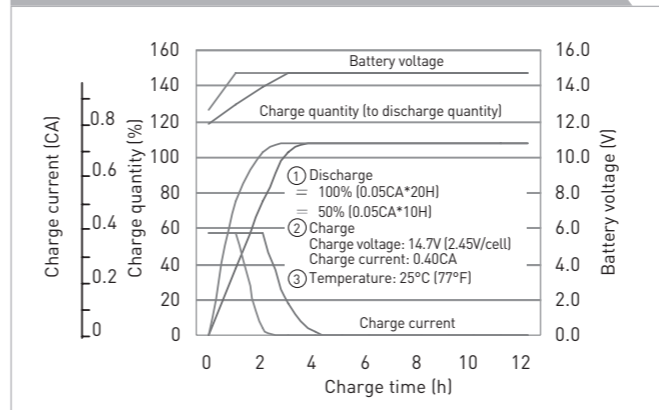
CYCLE LIFE VS. DEPTH OF DISCHARGE (ACC. IEC 61056)



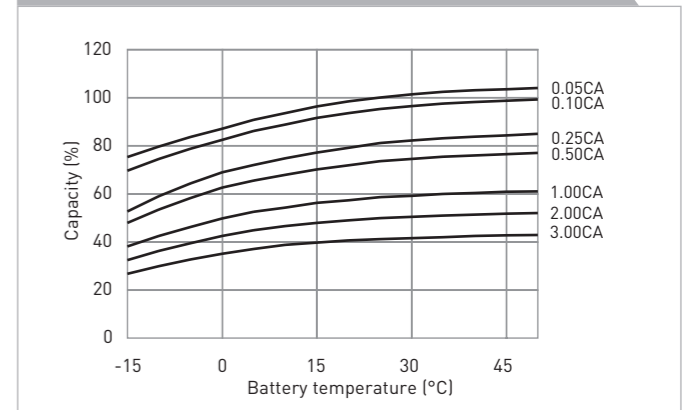
RESIDUAL CAPACITY TEST RESULT



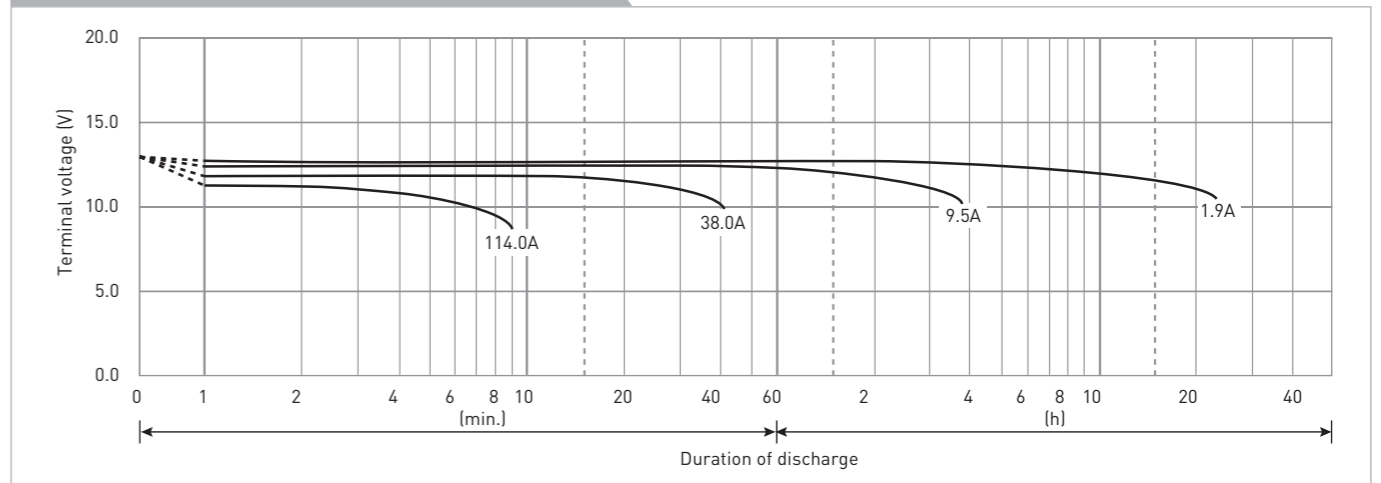
CONSTANT-VOLTAGE CONSTANT-CURRENT CHARGE CHARACTERISTICS FOR CYCLE USE



DISCHARGE CAPACITY BY TEMPERATURE AND BY DISCHARGE CURRENT



DISCHARGE CHARACTERISTICS



The data in this document are for descriptive purposes only and are not intended to make or imply any guarantee or warranty. Regarding handling and safety please consult our VRLA technical handbook chapter 1.