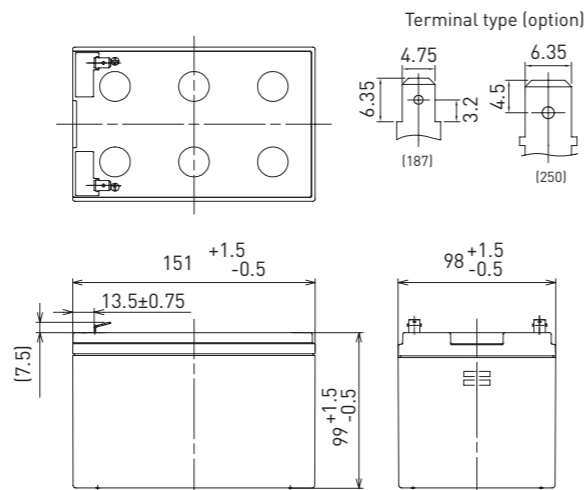


LC-PA1216P

DIMENSIONS (MM)



FOR STANDBY POWER SUPPLIES.
EXPECTED TRICKLE DESIGN LIFE: 10 - 12 YEARS AT 20°C
ACCORDING TO EUROBAT.



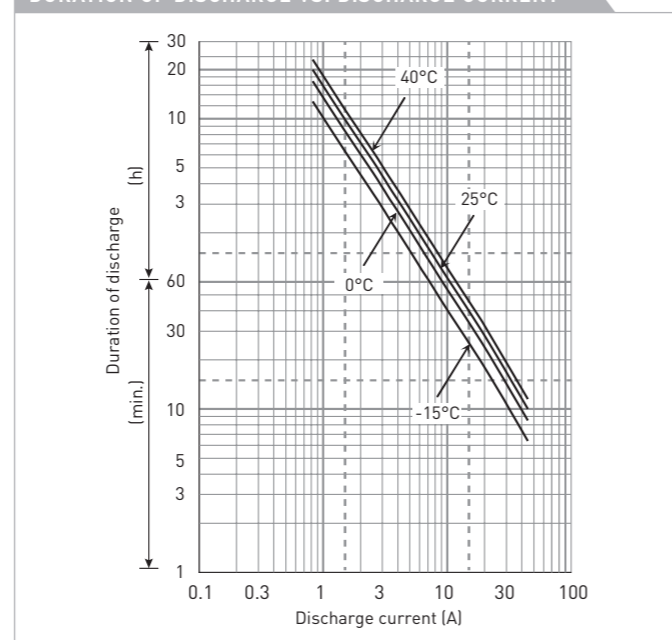
Contents indicated (including the recycle marking, etc.) are subject to change without notice.

Battery case resin: flame retardant (UL94 V-0)

SPECIFICATIONS

Name	LC-PA1216P/P1
Nominal voltage	12V
Nominal capacity (20 hour rate)	16Ah
Dimensions	Length 151mm
	Width 98mm
	Height 105mm
Approx. mass	4.10kg
Terminal	Faston 187/250
Capacity (25°C)	20 hour rate 16Ah
	10 hour rate 15Ah
	3 hour rate 13Ah
	1 hour rate 11Ah
Impedance	Fully charged battery (25°C) 13mΩ
	40°C 102%
Temperature dependency of capacity (20 hour rate)	25°C 100%
	0°C 85%
	-15°C 65%
Self-discharge (25°C)	After 3 month 91%
	After 6 month 82%
	After 12 month 64%

DURATION OF DISCHARGE VS. DISCHARGE CURRENT



WATT TABLE (25°C)

Cut-off	[Wattage/battery]															
	3min.	5min.	10min.	15min.	20min.	30min.	45min.	1h	1.5h	2h	3h	4h	5h	6h	10h	20h
9.6V	850	716	445	339	277	201	151	124	91.9	73.1	52.8	41.2	34.5	29.7	19.0	10.2
9.9V	815	685	427	323	268	197	150	121	90.1	72.5	52.6	40.9	34.2	29.1	18.9	10.2
10.2V	760	640	417	307	260	193	144	117	85.4	68.5	50.3	40.1	32.8	28.4	18.1	9.81
10.5V	680	580	398	293	249	185	140	115	82.0	66.4	49.3	39.3	32.7	28.1	18.0	9.78
10.8V	590	520	350	281	238	178	131	106	76.5	59.2	45.7	36.3	29.9	26.0	16.8	9.16

AMPERE TABLE (25°C)

Cut-off	[Ampere/battery]															
	3min.	5min.	10min.	15min.	20min.	30min.	45min.	1h	1.5h	2h	3h	4h	5h	6h	10h	20h
9.6V	82.9	66.3	44.7	32.7	26.3	19.1	13.8	10.9	7.98	6.21	4.33	3.28	2.82	2.34	1.54	0.800
9.9V	76.5	62.2	43.8	32.5	25.9	18.9	13.7	10.8	7.82	6.17	4.31	3.26	2.79	2.33	1.53	0.800
10.2V	70.3	58.3	42.7	31.8	25.4	18.7	13.6	10.7	7.66	6.01	4.26	3.24	2.77	2.32	1.52	0.800
10.5V	62.3	52.2	39.5	29.6	24.2	18.3	13.4	10.5	7.50	5.80	4.20	3.22	2.75	2.31	1.51	0.800
10.8V	52.4	45.8	35.3	27.6	23.5	17.6	13.2	10.3	7.29	5.52	4.11	3.18	2.68	2.28	1.49	0.800

All mentioned values are average values

LC-PA1216P

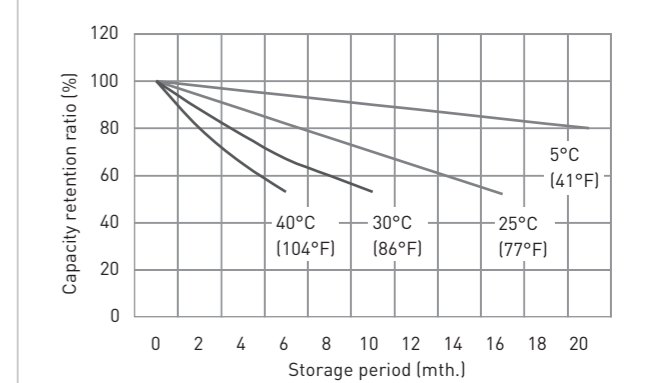
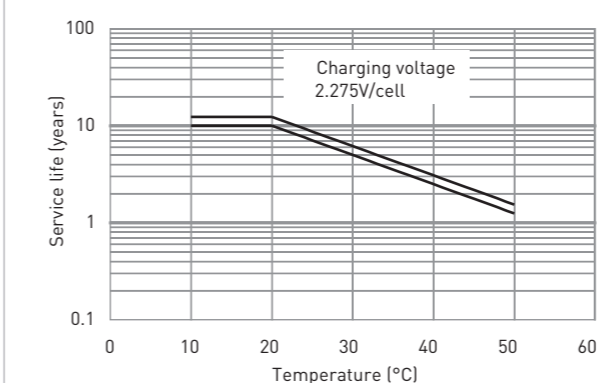
CHARGING METHOD (25°C)

Trickle use Control voltage: 13.6V - 13.8V
Initial current: 2.40A or smaller

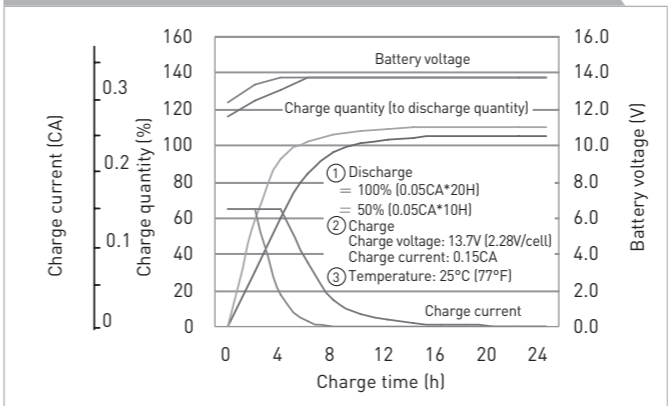
CUT-OFF VOLTAGE

Discharge current	0.800A - 3.20A	3.20A - 8.00A	8.00A - 16.0A	16.0A - 32.0A	32.0A - 48.0A
Cut-off voltage	10.5V	10.2V	9.9V	9.3V	8.7V

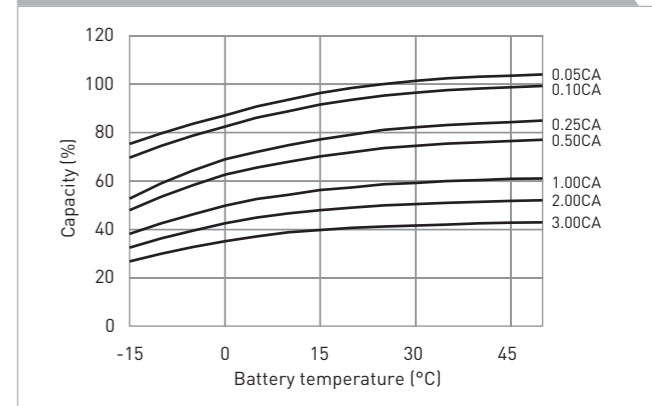
INFLUENCE OF TEMPERATURE ON TRICKLE LIFE



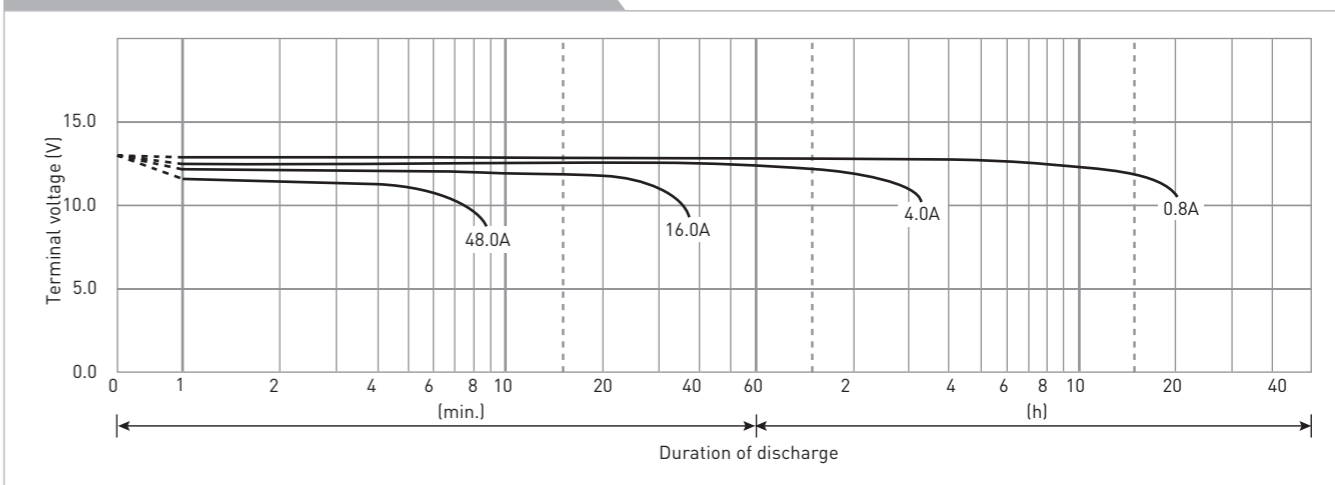
CONSTANT-VOLTAGE CONSTANT-CURRENT CHARGE CHARACTERISTICS FOR TRICKLE USE



DISCHARGE CAPACITY BY TEMPERATURE AND BY DISCHARGE CURRENT



DISCHARGE CHARACTERISTICS



The data in this document are for descriptive purposes only and are not intended to make or imply any guarantee or warranty. Regarding handling and safety please consult our VRLA technical handbook chapter 1.