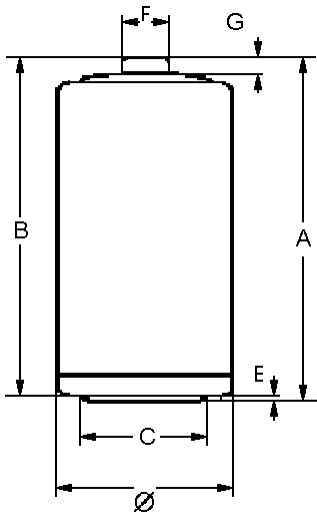


# Data Sheet

Type Designation	2020
Designation IEC	R20 P
System	Zn-MnO <sub>2</sub> (Zinc Chloride)
Shelf Life (Coding)*	36 months
Nominal Voltage [V]	1.5
Typical Capacity C [mAh]	6000 (discharge with high-resistance)
Permissible Temperature Range	- 10 °C ... 50 °C
Weight, approx. [g]	100
Volume [ccm]	51.3



Dimensions [mm]	min:	max:
Ø	32.3	34.2
A	-	61.5
B	59.5	-
C	18.0	-
E	-	1.0
F	-	9.5
G	1.5	-

## Typical Capacities (at 20°C)

Discharge Type	Load	End Voltage[V]	1.0	0.9
Portable Lighting 4m/h, 8h/d, 7d/w	2.2 Ω	Time [m]	263	390
		Capacity [Ah]	2.30	3.27
		Energy [Wh]	2.67	3.63
Discharge Type	Load	End Voltage[V]	0.9	0.8
Toys 1h/d, 7d/w	2.2 Ω	Time [h]	5.0	6.7
		Capacity [Ah]	2.42	3.09
		Energy [Wh]	2.62	3.20
Discharge Type	Load	End Voltage[V]	1.0	0.9
Tape Recorders 1h/d, 7d/w	3.9 Ω	Time [h]	10.9	14.2
		Capacity [Ah]	3.22	4.06
		Energy [Wh]	3.82	4.58
Discharge Type	Load	End Voltage[V]	1.0	0.9
Transistor Radios 4h/d, 7d/w	10 Ω	Time [h]	36.0	43.0
		Capacity [Ah]	4.37	5.03
		Energy [Wh]	5.32	5.97

**No publication or circulation of data to third parties without consent of VARTA Consumer Batteries**

\* In consideration of typical loss of capacity at storage and application.