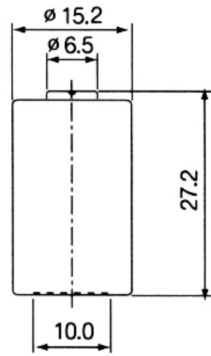
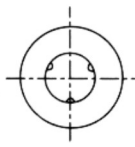


PHOTO LITHIUM BATTERY

Document Title: PB04CR2

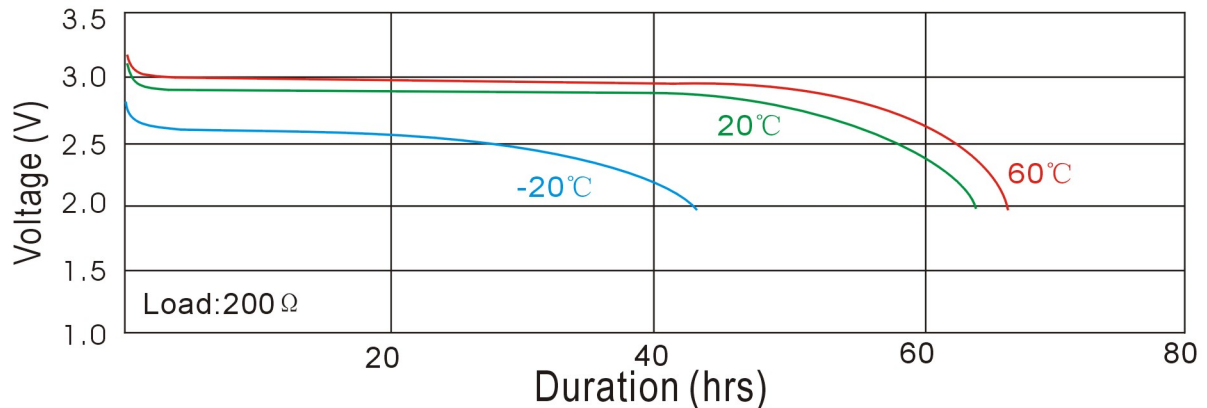
CR 2



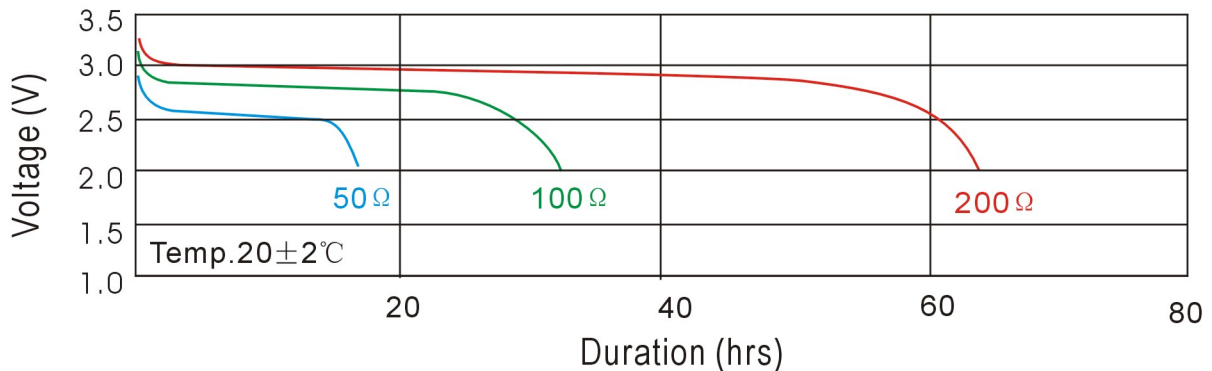
Unit: mm

Chemical System	: Lithium/Manganese Dioxide
Camelion Model	: CR2
Average Weight	: 11.0g
Dimension (∅ x H)	: 15.2 ^{±0.2} x 27.2 ^{±0.3} mm (0.60 ^{±0.01} x 1.07 ^{±0.01} inch)
Nominal Voltage	: 3.0 Volts
Capacity	: 850mAh (10mA constantly discharge to 2.0V at 20±2°C)
Standard Discharge Current:	: 10mA
Max. Continuous Discharge Current	: 1000mA
Max. Pulse Discharge Current	: 2500mA
Relative Humidity	: 65±20%
Jacket	: Aluminium Foil Label

Typical Temperature Characteristics



Typical Load Characteristics



Notice:

Environmental elements comply with RoHS requirements. This information is subject to change without prior notice and for reference only. It should not be used as a basis for a product guarantee or warranty. For additional information, please consult your nearest Camelion Sales Office or Distributor or visit our website at: www.camelionbattery.com.