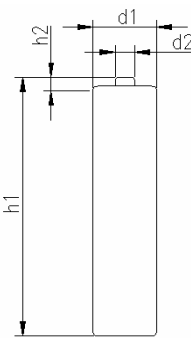


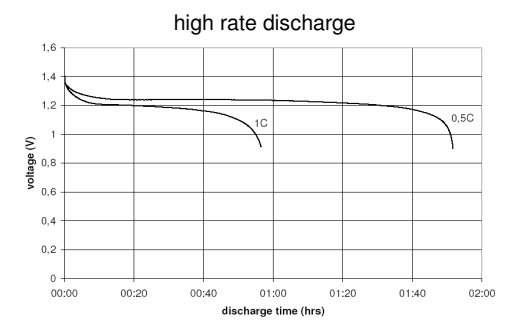
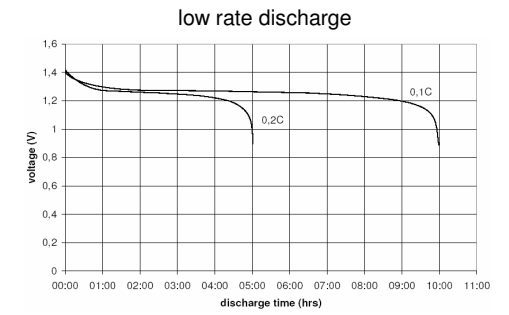
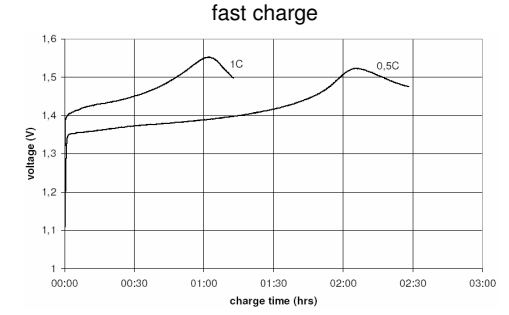
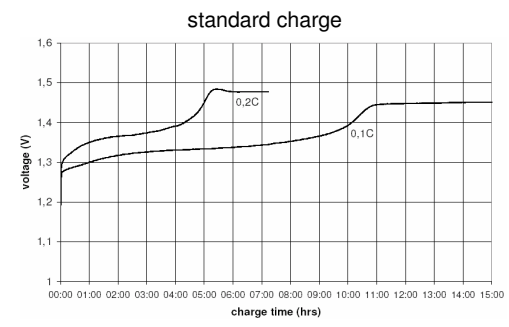
		Conditions	
cell type:		NiMH	
cell size:		AAA	
nominal voltage:	1.2	V	
max. charge voltage:	1.45	V	at standard charge (0.1C / 20 °C)
capacity			
nominal:	1000	mAh	discharge at 0.2C
minimum:	840	mAh	discharge at 0.2C
	760	mAh	discharge at 1C
			1.0V end discharge voltage
			ta: 20 °C
max. continuous discharge current:	2000	mA	ta: 0...45 °C
charge			
standard charge:	100	mA	14....16hrs
quick charge:	300	mA	4hrs
fast charge:	1000	mA	1.1hrs
recommended charge termination control parameters:	5...10	mV	- delta V
	0.8...1	°C	temperature rise per minute
	45...50	°C	TCO (temperature cut off)
trickle charge current:	9...30	mA	(recommended)
continuous overcharge: (less than 1 year)	≤ 84	mA	no conspicuous deformation no leakage
internal resistance: (impedance)	≤ 40	mΩ	at 1KHz battery fully charged
life expectancy:	≥ 500	cycles	acc. IEC standard
self discharge			
charge retention:	≥ 60	%	after 28 days storage at 20 °C
ambient temperature range:			
	0...45	°C	standard charge
	10...40	°C	fast charge
	- 20...65	°C	discharge (≤1.0C)
	0...45	°C	discharge (>1.0C)
	- 20...50	°C	storage (≤1 month)
	- 20...40	°C	storage (≤3months)
	- 20...30	°C	storage (≤12months)

QCT1: 20/800/45
QCT2: 30/700/50

mechanical specifications			
cell dimensions (incl. label)			
diameter d1:		10.5	- 0.7 mm
diameter d2:	max.	3.8	mm
height h1:		44.5	- 1.5 mm
height h2:	min.	0.8	mm
weight:		13	± 2 g
blister card dimensions:		123	x 85 mm
blister card weight (incl. batteries):		34	g



Diagrams



	ANSMANN Specifications for model:	AAA - 1000mAh
		2pcs blister package
	data sheet no. / part no.	5030892
	version no.	0
	author / date	Gramlich / 19.03.2009

Manufacturer reserves the right to alter or amend the design, model and specification without prior notice