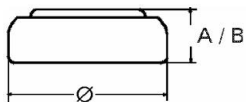


**Type Number**..... 391  
**Designation IEC**..... SR 55  
**System**..... Silver oxide/ Zinc /  
 KOH - Electrolyte



**Nominal Voltage**..... 1,55 V  
**Typical Capacity C**..... 42 mAh  
 Load 13 kOhm, at 20°C down to 1.2 V

**Weight (approx.)**..... 0,9 g  
**Volume**..... 0,18 ccm

**Temperature Ranges** min max.  
 Storage..... -10°C 65°C  
 Discharge..... -10°C 65°C

**Dimensions** min max.  
 Diameter (A)..... 11,25 11,6  
 Height (B)..... 1,85 2,1

**Segment**..... Watch/High Drain

**Main Applications**..... Watch  
 Photo  
 Electronic

### Typical Capacities (at 20°C)

Discharge Type	Load	End Voltage: 1.2V
Continuous 24h/d, 7d/w Current [ $\mu$ A]	13000 $\Omega$  120	Time: 340 h Capacity [mAh]: 42 Energy [MWh]: 65

### No publication or circulation of data to third parties without consent of VARTA Consumer Batteries

All Data contained herein is for single cells For battery applications, performance data may vary from single cell data, depending on specific battery configuration