

LC-P1224P

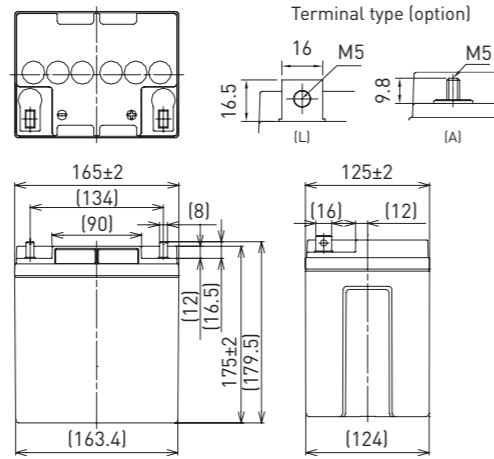
DIMENSIONS (MM)



FOR STANDBY POWER SUPPLIES.  
EXPECTED TRICKLE DESIGN LIFE: 10 - 12 YEARS  
AT 20°C ACCORDING TO EUROBAT.



G198049



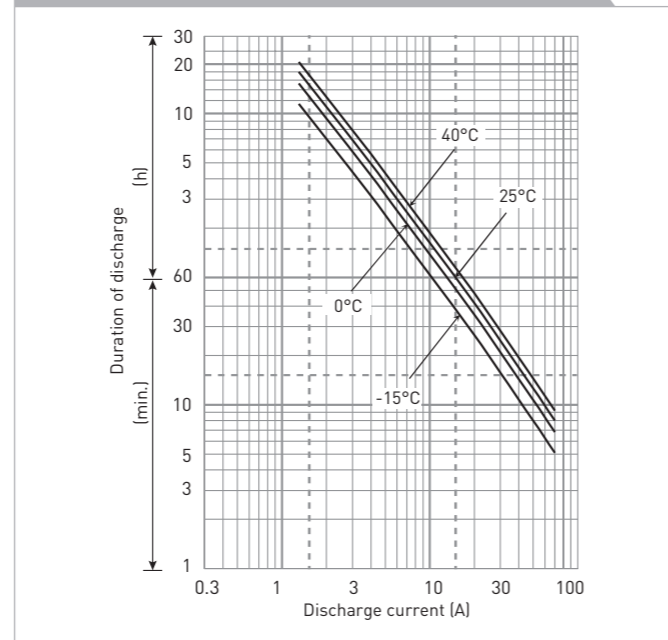
Battery case resin: flame retardant (UL94 V-0)

Contents indicated (including the recycle marking, etc.) are subject to change without notice.

SPECIFICATIONS

<b>Name</b>	LC-P1224PG/APG	
<b>Nominal voltage</b>	12V	
<b>Nominal capacity (20 hour rate)</b>	24Ah	
<b>Dimensions</b>	<b>Length</b>	165mm
	<b>Width</b>	125mm
	<b>Height</b>	179.5mm/175mm
<b>Approx. mass</b>	8.05kg	
<b>Terminal</b>	M5 bolt/nut & threaded post	
<b>Capacity (25°C)</b>	<b>20 hour rate</b>	24Ah
	<b>10 hour rate</b>	22Ah
	<b>3 hour rate</b>	18Ah
	<b>1 hour rate</b>	14Ah
<b>Impedance</b>	<b>Fully charged battery (25°C)</b>	11mΩ
<b>Temperature dependency of capacity (20 hour rate)</b>	<b>40°C</b>	102%
	<b>25°C</b>	100%
	<b>0°C</b>	85%
	<b>-15°C</b>	65%
<b>Self-discharge (25°C)</b>	<b>After 3 month</b>	91%
	<b>After 6 month</b>	82%
	<b>After 12 month</b>	64%

DURATION OF DISCHARGE VS. DISCHARGE CURRENT



WATT TABLE (25°C)

Cut-off	5min.	10min.	15min.	20min.	30min.	45min.	1h	1.5h	2h	3h	4h	5h	6h	10h	20h
9.6V	992	739	523	441	317	234	183	118	104	73.8	58.6	47.9	40.8	26.4	14.6
9.9V	931	724	520	434	314	232	181	116	103	73.4	58.2	47.5	40.6	26.3	14.6
10.2V	872	706	509	426	310	230	179	113	101	72.7	57.8	47.2	40.3	26.0	14.5
10.5V	782	654	474	405	303	226	175	111	97.2	71.6	57.4	46.8	39.8	25.9	14.4
10.8V	691	583	442	394	293	223	172	108	92.6	70.1	56.6	45.6	39.2	25.6	14.3

AMPERE TABLE (25°C)

Cut-off	5min.	10min.	15min.	20min.	30min.	45min.	1h	1.5h	2h	3h	4h	5h	6h	10h	20h
9.6V	89.0	66.0	45.5	38.0	27.1	19.9	14.6	10.0	8.80	6.20	4.90	3.89	3.40	2.27	1.23
9.9V	83.5	64.7	45.2	37.4	26.8	19.8	14.5	9.80	8.73	6.17	4.87	3.86	3.39	2.26	1.22
10.2V	78.2	63.0	44.3	36.8	26.5	19.6	14.3	9.60	8.51	6.11	4.84	3.83	3.36	2.23	1.21
10.5V	70.1	58.4	41.2	34.9	25.9	19.3	14.0	9.40	8.21	6.01	4.80	3.80	3.32	2.22	1.20
10.8V	62.0	52.1	38.4	34.0	25.0	19.0	13.7	9.14	7.82	5.89	4.74	3.71	3.27	2.20	1.19

All mentioned values are average values

LC-P1224P

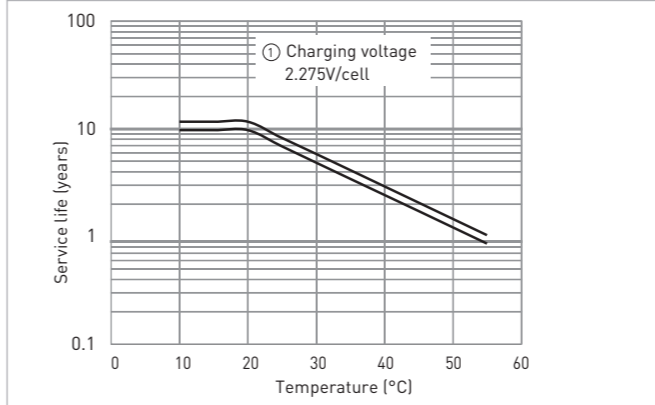
CHARGING METHOD (25°C)

**Trickle use** Control voltage: 13.6V - 13.8V  
Initial current: 3.6A or smaller

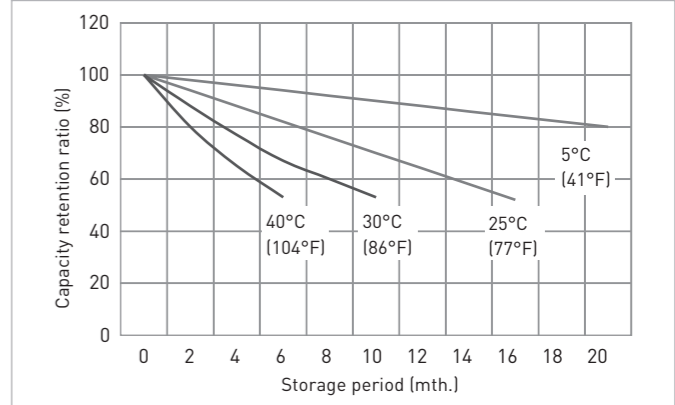
CUT-OFF VOLTAGE

<b>Discharge current</b>	1.2A - 4.8A	4.8A - 12A	12A - 24A	24A - 48A	48A - 72A
<b>Cut-off voltage (V)</b>	10.5	10.2	9.9	9.3	8.7

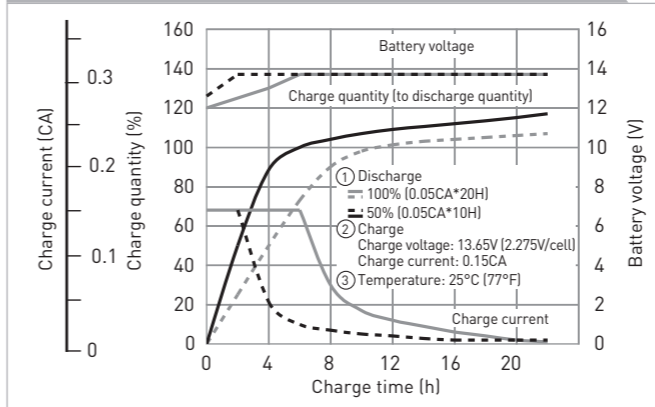
INFLUENCE OF TEMPERATURE ON TRICKLE LIFE



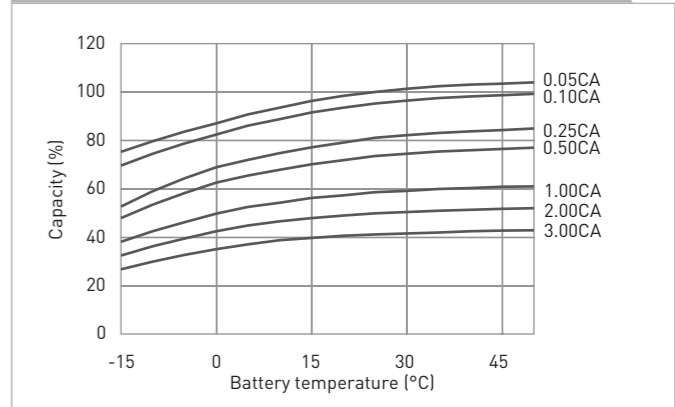
RESIDUAL CAPACITY VS. STORAGE PERIOD



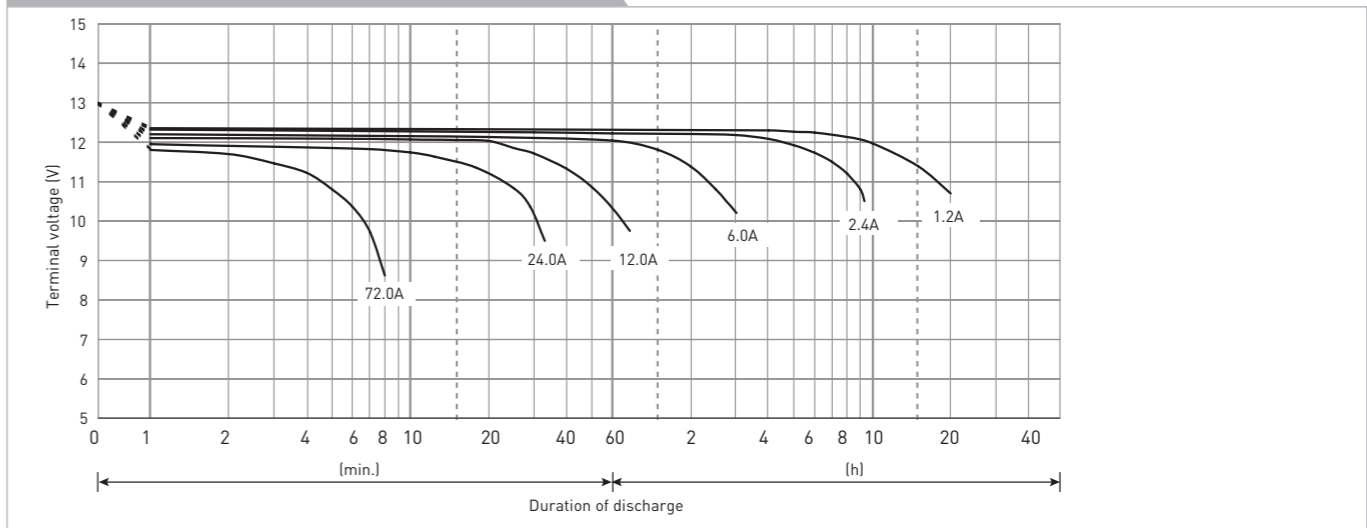
CONSTANT-VOLTAGE CONSTANT-CURRENT CHARGE CHARACTERISTICS FOR TRICKLE USE



DISCHARGE CAPACITY BY TEMPERATURE AND BY DISCHARGE CURRENT



DISCHARGE CHARACTERISTICS



The data in this document are for descriptive purposes only and are not intended to make or imply any guarantee or warranty. Regarding handling and safety please consult our VRLA technical handbook chapter 1.