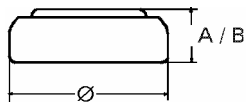


Data Sheet

Type Number 357
Designation IEC SR 44
System Silver oxide / Zinc /
 KOH - Electrolyte



Nominal Voltage 1,55 V
Typical Capacity C 165 mAh
 Load 5,6 kOhm, at 20°C down to 1.2 V

Weight (approx.) 2,33 g
Volume 0,51 ccm
Coding..... Manufacturing Month/Year by
 Letter Code

Temperature Ranges
 Storage min max.
 Discharge -10°C 65 °C
 -10°C 65°C

Dimensions
 Diameter ... min max.
 Height (A/B) 11,25 11,60
 5 5,4

Segment
 Watch / High Drain

Main Applications
 Watch
 Photo
Typical Capacities (at 20°C) Electronic Devices

Discharge Type	Load	End Voltage:	1.2 V
Continuous	5600 Ω	Time:	601 h
24h/d,7d/w		Capacity [mAh]:	165
Current [μA]:	275	Energy [MWh]:	252