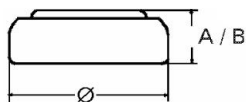


Type Number..... 357
Designation IEC..... SR 44
System..... Silver oxide/ Zinc /
 KOH - Electrolyte



Nominal Voltage..... 1,55 V
Typical Capacity C..... 145 mAh
 Load 5,6 kOhm, at 20°C down to 1.2 V

Weight (approx.)..... 2,05 g
Volume..... 0,51 ccm
Coding..... Manufacturing Month/Year
 by Letter Code

Temperature Ranges min max.
 Storage..... -10°C 65°C
 Discharge..... -10°C 65°C

Dimensions min max.
 Diameter..... 11,25 11,6
 Height (A/B)..... 5 5,4

Segment..... Watch/High Drain

Main Applications..... Watch
 Photo
 Electronic Devices

Typical Capacities (at 20°C)

Discharge Type	Load	End Voltage:	1.2V
Continuous	5600 Ω	Time:	540 h

No publication or circulation of data to third parties without consent of VARTA Consumer Batteries

All Data contained herein is for single cells For battery applications, performance data may vary from single cell data, depending on specific battery configuration