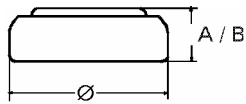


Data Sheet

Type Number 20301
Designation IEC SR 43
System Silver oxide / Zinc /
 NaOH - Electrolyte



Nominal Voltage 1,55 V
Typical Capacity C 95 mAh
 Load 5,6 kOhm, at 20°C down to 1.2 V

Weight (approx.) 1,78 g
Volume 0,39 ccm
Coding..... Date of Manufacturing
 Month/Year

Temperature Ranges
 Storage min max.
 -10°C 65°C
 Discharge -10°C 65°C

Dimensions
 Diameter (Ø)..... min max.
 11,25 11,6
 Height (A/B) 3,8 4,2

Segment Watch

Main Applications Watch
 Photo
 Electronic

Typical Capacities (at 20°C)

Discharge Type	Load	End Voltage:	1.2 V
Continuous	5600 Ω	Time:	375 h
24h/d,7d/w		Capacity [mAh]:	95
Current [µA]:	275	Energy [mWh]:	138